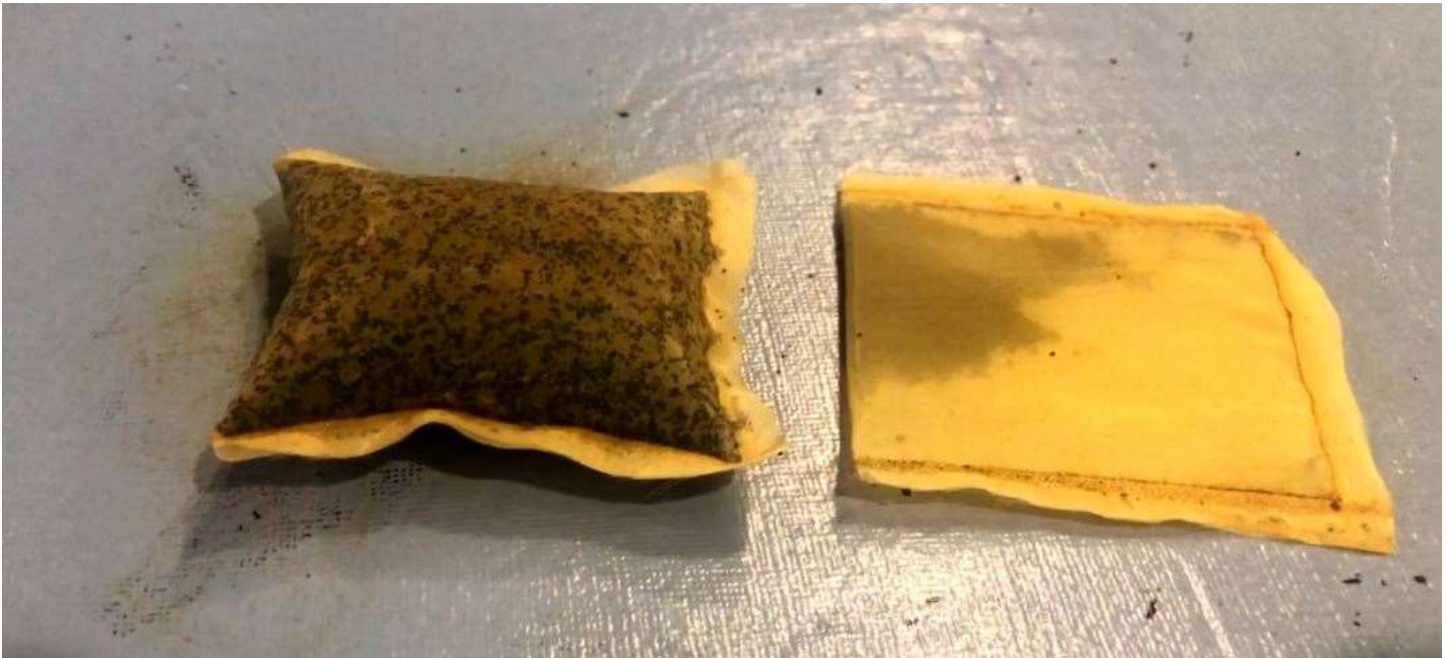




Powder alone saturated to its weight absorption



2 inch by 2 inch collagen
sheet covering poultice



2 inch by 2 inch poultice before and after saturation



Finer poor polyurethane foam impregnated with 14% I-Sorbe powder.



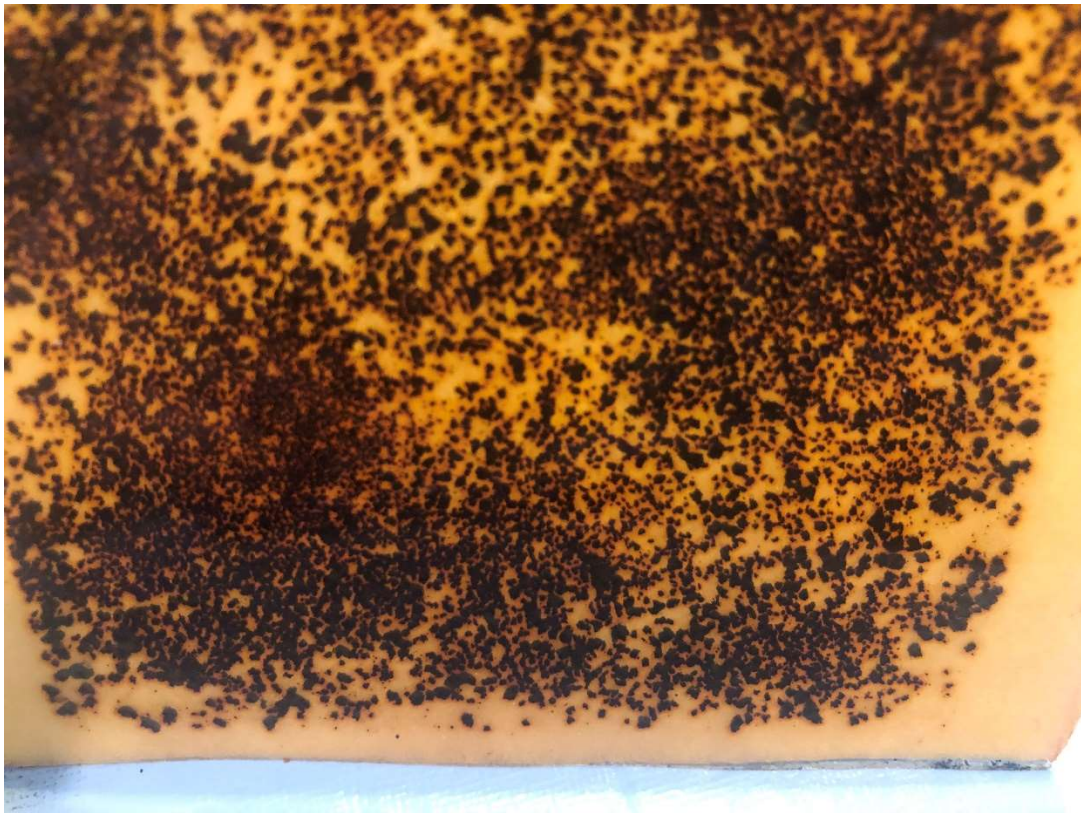
Anti-microbial paper towel coated dressing.



Medium pore polyurethane foam roll suitable for a dispensing device.



Collagen sheet adhered to an adhesive substrate covered with I-Sorbe powder.



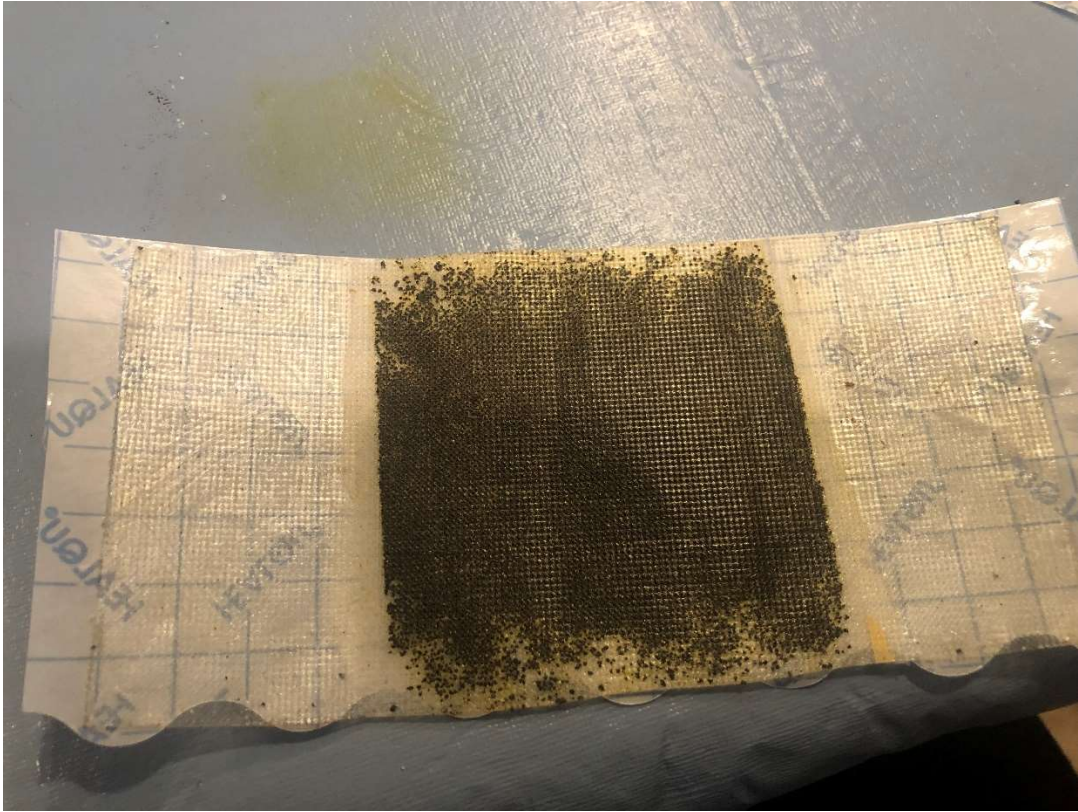
I-Sorbe powder distribution on an adhesive coated substrate.



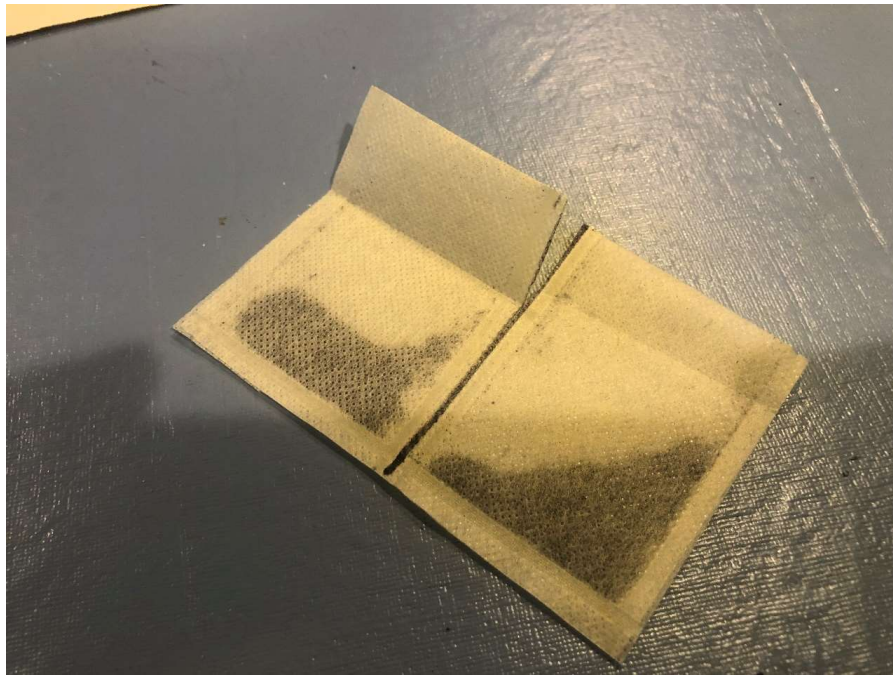
I-Sorbe Adhesive Band-Aid type island dressings on release paper.



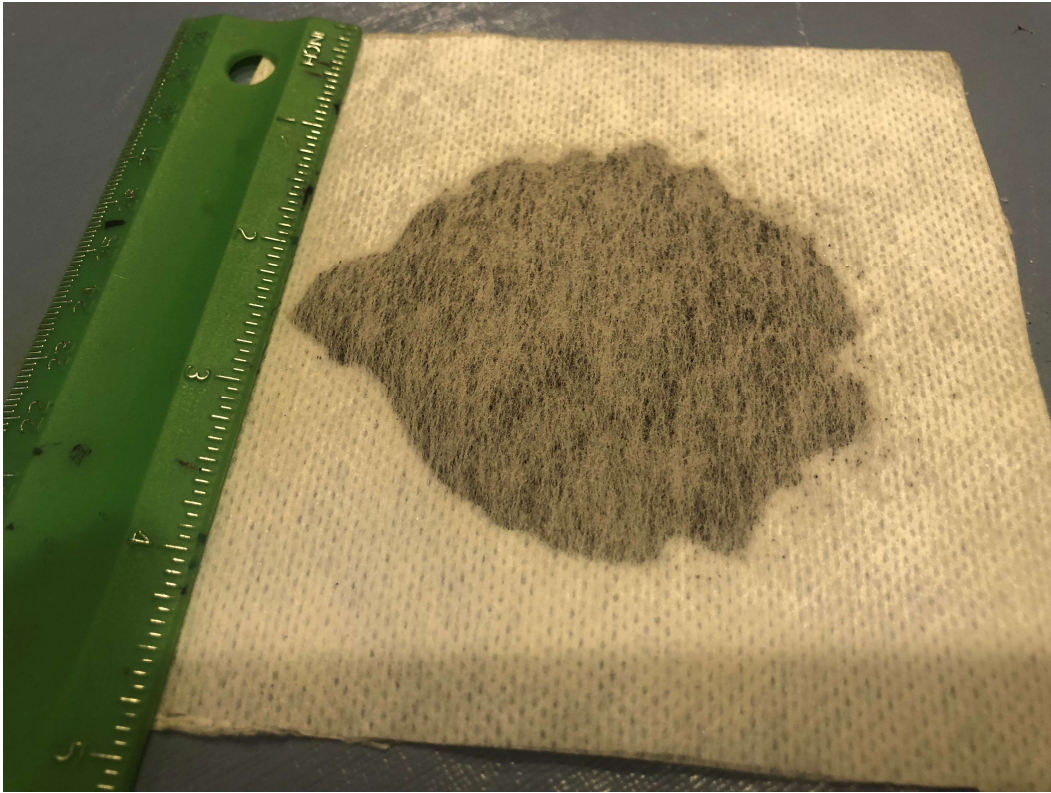
Poultice saturated and dissipated of iodine content.



Island dressing powder covered with hydrophilic web on adhesive coded support.



Two 4"by 4" poultice units. Can be used separately or as one 4"x 8"unit.



4 "x 5" poultice with pocket of I-Sorbe powder, covered with, and adhering to a web covering.



Saturated I-Sorbe coarse foam forming a gel surface.



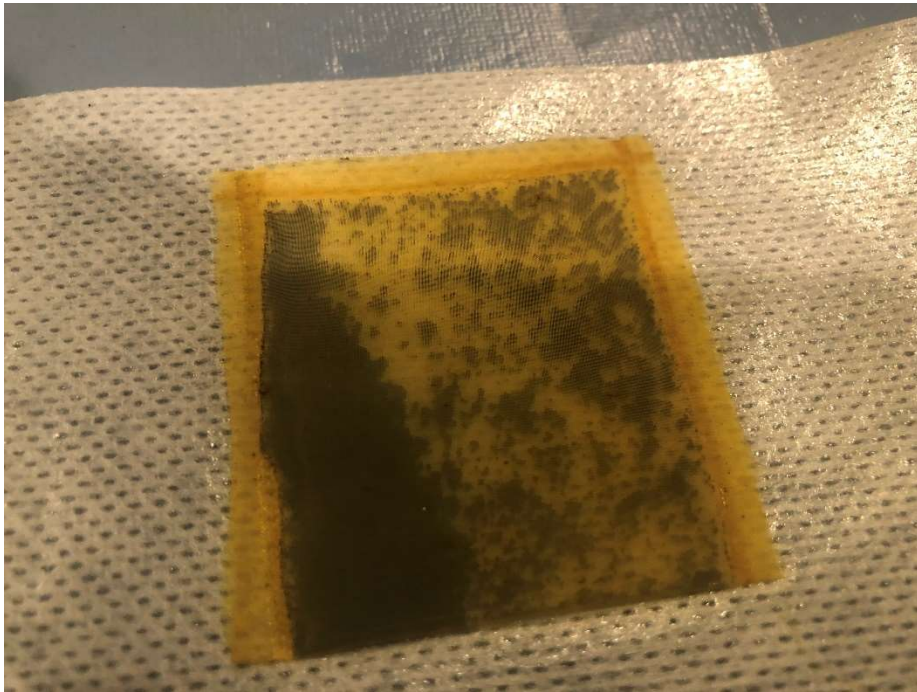
Saturated fine pore I-Sorbe foam with smooth gel surface.



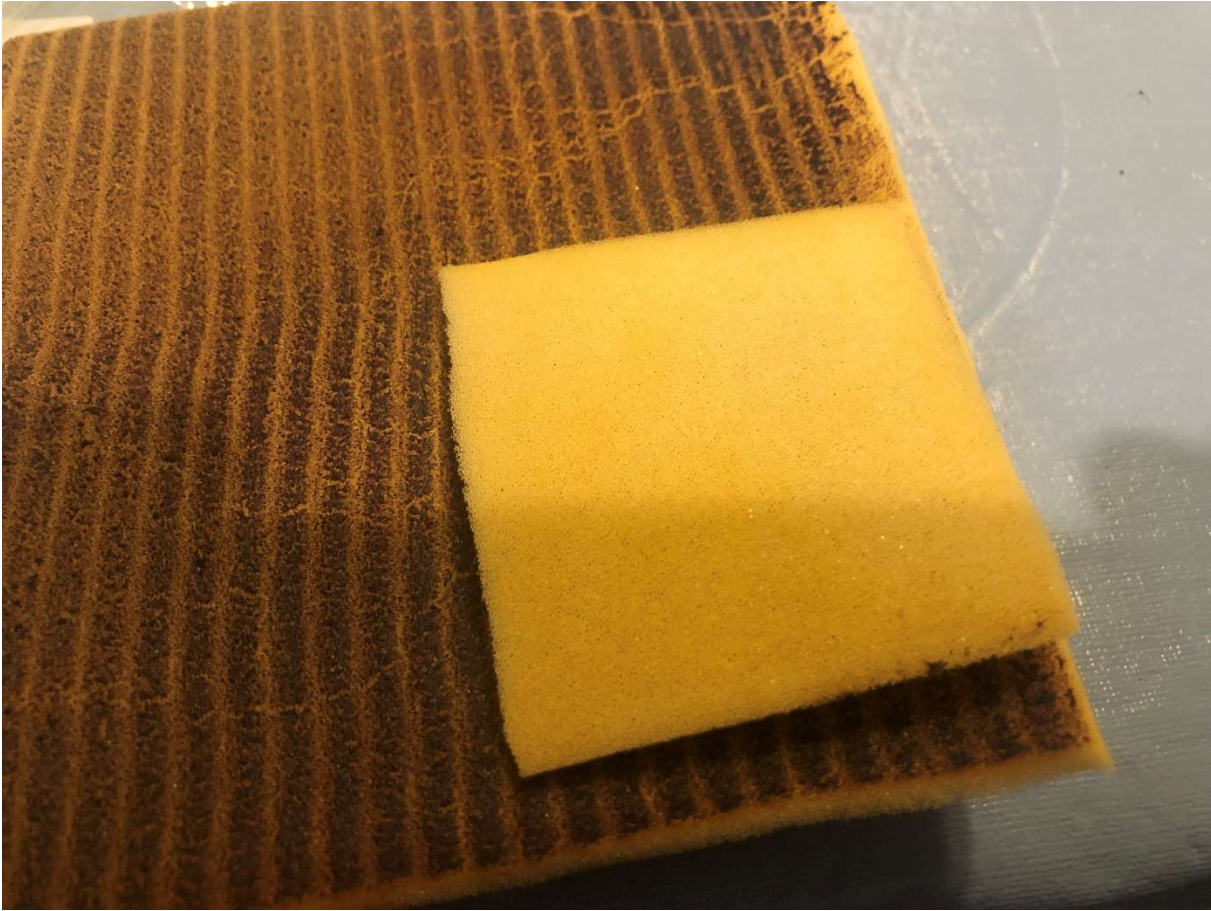
Saturated medium pore I-Sorbe flat dressing.



2" by 2" separate poultices, with pockets of I-Sorbe powder, on micropore covered with hydrophilic web.



2" by 2" poultice, attached to micropore racking, to make an Island Dressing.



Fine pore I-Sorbe coated on one surface.

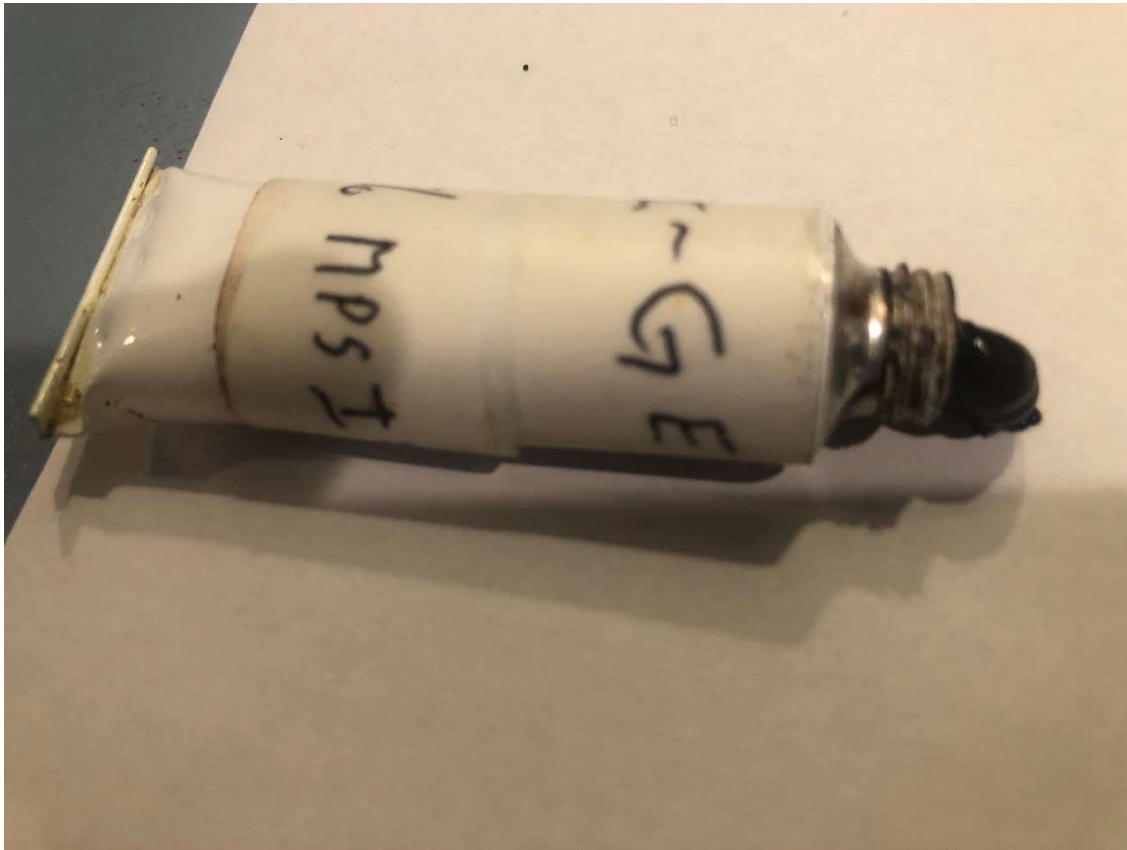


Coarse pore I-Sorbe foam sheet suitable for NPT and air sanitizing.

Collagen cover,
fastened on powder-coated
adhesive layer.



Air blower attached to
I-Sorbe packed cartridge
to sanitize air.



I-Gel dispensed from tube.



Face mask with antimicrobial insert to sanitize breath.



I-Sorbe on wound dressing changes color, indicating replacement needed.



Cord design dressing for treating intertrigo irrigation.